

**VBM**



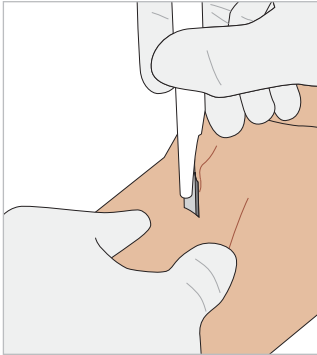
# ScapelCric

A surgical set for cricothyrotomy according to the scalpel technique

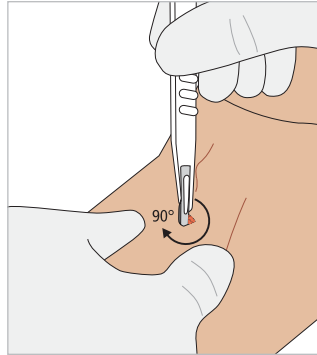
"CICO"  
can't intubate,  
can't oxygenate

## Use | Set content

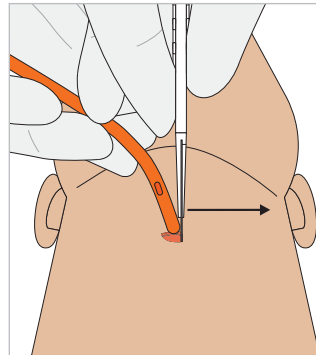
ScalpelCric has been developed to match the latest recommendations from the DAS (Difficult Airway Society) 2015 guidelines. Based on the simple description of '**stab, twist, bougie, tube**' the ScalpelCric is meant to facilitate the execution of the scalpel technique.



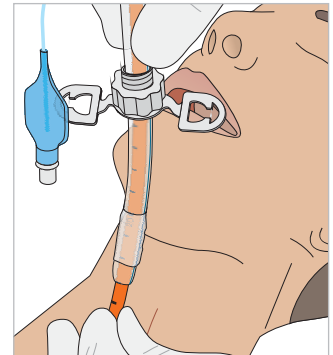
1. stab



2. twist



3. bougie

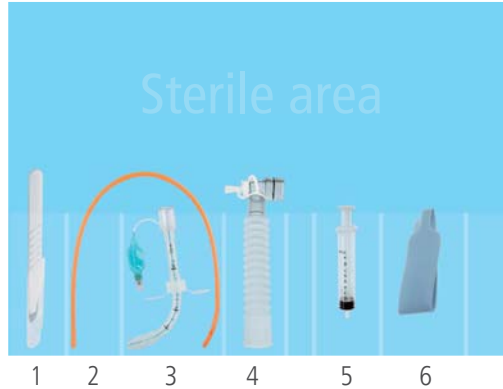


4. tube

- 1 Adjustable flange
- 2 Thin walled, low pressure cuff
- 3 Smooth tip for ease of insertion



The set is packed in a specific sterile pouch, ready to use.  
Pack size 22 (L) x 13 (W) x 4 (H) cm



#### Set content

- 1 Scalpel #10
- 2 14 Fr bougie (40 cm)
- 3 6.0 mm cuffed tube
- 4 Extension tubing with suction capability
- 5 Syringe 10 ml
- 6 Necktape for tube fixation

## References

“Anaesthetists must learn a scalpel technique and have regular training to avoid skill fade.”

Baker PA, Weller JM, Greenland KB, Riley RH, Merry AF.  
Education in airway management.  
Anaesthesia 2011; 66 (Suppl 2): 101–11

“Training should be repeated at regular intervals to ensure skill retention.”

Difficult Airway Society 2015 guidelines for management of unanticipated difficult intubation in adults.

## Order information



	REF	Box
ScalpelCric, sterile	30-08-447-1	1
ScalpelCric, non sterile (for training)	30-08-447	1

## Additional info

### ▶ Video

Use of ScalpelCric



### ▶ Brochure

Product brochure



Information material also available at  
[www.vbm-medical.com/download/media](http://www.vbm-medical.com/download/media)

Connect with us:



**VBM** **Medizintechnik GmbH**

Einsteinstrasse 1 | 72172 Sulz a. N. | Germany  
Tel.: +49 7454 9596-0 | Fax: +49 7454 9596-33  
e-mail: [info@vbm-medical.de](mailto:info@vbm-medical.de) | [www.vbm-medical.de](http://www.vbm-medical.de)